



# 产品手册

PRODUCTS SELECTION

## XPOMATPOH GC 8000

# XPOMATPOH GC 8000



**A frontier GC with IOT technology, provide more possibilities.**

**A great balance between Reliability, Performance and Efficiency. It's built for future labs that focus on easy access and operation.**

**Ideal GC system for environmental, chemical, petrochemical, food, forensic, pharmaceutical, and material testing.**





## Real "IoT" Solution, Access to your GC at any time

Embedded with our innovative software platform - uniLite, GC 8000 provide much more possibilities to interact with you GC. Performing time-consuming diagnostics, updating firmware, real-time plotting, editing method and sequence, checking logs, all those functions could be done through an intuitive multi-function touchscreen. User could connect to any GC in their lab via pads, phones, or computer. Just power your GC in a "intelligent" way. A intelligent and smart "IOT" instrument should be like this.

## Advanced Pneumatic Control

The GC 8000 features core microchannel-based advanced pneumatic control (APC) architecture. This meet your modern control request and toughest challenges. What's more, the system's proven robustness and reliability APC modules can protect you from suffering from H<sub>2</sub> leaking.

# Highly Modulized Detectors, Minimize GC Downtime

Less downtime than before and easy to do the maintenance. All detector modules are self-installable, and this will significantly reduce the need to wait for service. Each module includes gas manifolds, signal amplifier board, digital interface PCBA, and connections. A single 4 pins cable can handle all electronics installation, it is built for easy access and replacement.

## Powerful options for high speed and throughput

Breaking all limits in the number of inlets and detectors, more than 4 inlets, 5 detectors, 2 ovens can be installed in a single GC system. We can make your dream real and offer the powerful tools you need.

Rich add-ins are available, including universal valve box(6 valves), "big" valve box, automatic multi-channel liquid and gas sampler, and dynamic dilution system, etc. Moreover, all add-ins can be configured in GC software and controlled via our standard software suite.

## Anywhere, any terminals

The embedded 7" touchscreen is ideal for common tasks. And the innovative system can speed learning and support users' daily work. The web server built-in GC can support you to boost laboratory efficiency by access to the GC remotely by your internet explorer.

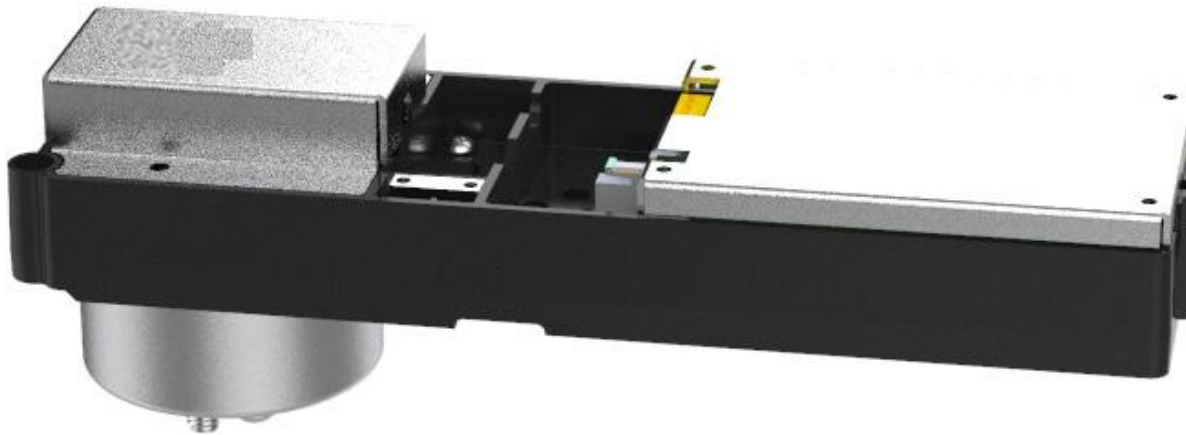
If you need fast local instrument control access, take advantage of the 4 buttons on the control panel: Stop, Pre-run, Service and Start.

## Highly modulized and plug-and-play

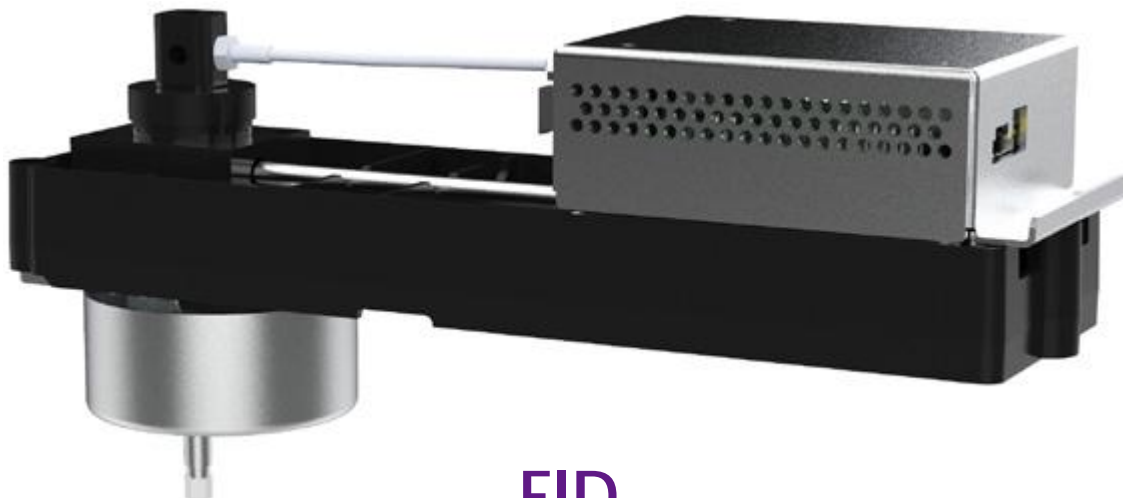
Eliminate the complexity of GC modules and minimize the need for specialized service assistance. APC modules can be installed easily by one single 4 pin cable and 1-2 finger tighten screw. Detector modules incorporate all electronic circuits, together with detector cell.

With the GC 8000 chromatography, the GC configuration can be modified in just two minutes - all without the need for service personnel.

Even for the headache GC firmware/configuration update, it can be done by single click on the touch screen, no need to worry about the PC OS version or compatibility.



TCD



FID

## Expand your productivity and connectivity

With the leading uniCube technology, GC 8000 system can easily expand automation and sample throughput. Use third-party devices from UniStation for more analytical versatility, the GC 8000 Gas Chromatograph is compatible with the many thermal desorption and sample automation solutions. Control of these UVTech or third-party devices can be fully integrated into UniStation and UniLite, providing enhanced usability, traceability, and ease of compliance.

UVTech also provide standard multi-sample automatic injection system for gas sample, liquid sample, built-in dynamic sample dilution system, thermal desorption modules, etc.

The GC 8000 system is designed for compatibility with the majority of existing consumables required by injectors and detectors of other brands. This compatibility allows further operational cost savings without the need to buy additional sets of dedicated consumables.





Auxiliary oven can be installed at the left side or on the top, which can support up to 8 valves, 6 aux thermal zones, 4 cap columns installed at once. It covers any possible multi-column applications and standard methodologies.

For analyzers with high temperature sample, the optional transfer line can reach more than 300 °C. What's more, two programable oven can be installed in a single GC system.

For the auxiliary box installed at the left side, optional 2 more detector, 9-channel aux gas controller can be configured.



**Big "Universal" Valve Box**

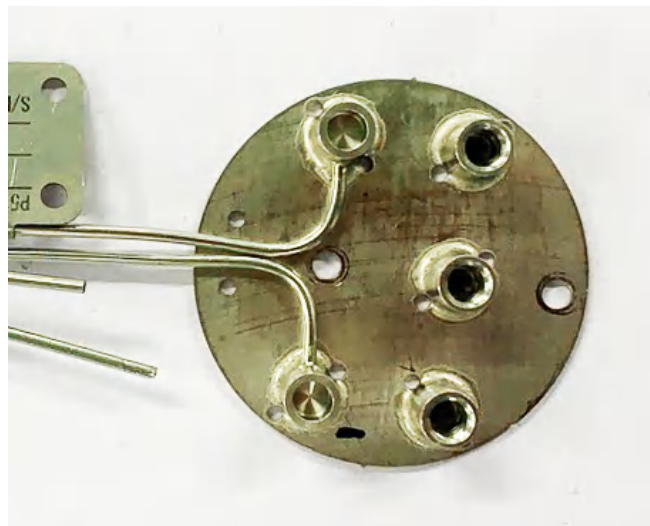
# Save time with robust unattended operation

The slide-in self-aligning L7000 Liquid Autosampler provides reliable unattended sample analysis, saving valuable time and increasing productivity, while improving data quality with high-precision injections. With simultaneous injection into two channels, the dual-tower sampler configuration can run up to 150 samples in half the time.



Varies of Auto Samplers

With micro-channel bonding technology, the low-mass design Deanswith system allow user to perform complex GCxGC and GC-MSD application. GC 8000 provide splitters, compact Tee for MSD transfer line, quick swap and fitting, All parts can be coated by inert silicon coating. All flow and pressure settings can be set via mature caculators.



Deanswitch System

For petro samples with C1-C40+ components, it is difficult to analysis the light Hydrocarbons with heavy ones by single injection. The optional HPLIS(High pressure liquid injection system) can be installed on the top of SSL and replace manual injection.

Moreover, the injection process can be convert to an complete on-line system, eluminate errors and reduce the danger.



**HPLIS High Pressure Liquid Sample Injection System**

LTM column combine a high-quality fused silica capillary column with heating and temperature-sensing components for a low thermal mass column assembly.

GC 8000 offer varies of LTM column types for every challenging applications. The GC 8000 accurate temperature controller can provide perfect repeatability and result you need.







## Contact

UVTech

Add: 2nd Floor, Building 3, No. 1 Chaoqian Rd, Changping, Beijing, China PRC.

TEL:18613365565

MAIL: [info@uvtech-cc.com](mailto:info@uvtech-cc.com)